

Industry- Academia Partnerships – A View From Both Sides

Dr Liz Tunbridge,
Boehringer Ingelheim

Life forward

Disclosures

I am a full-time employee of Boehringer Ingelheim

In my former academic role, I received unrestricted educational grant from J&J Innovation, and from Biogen and Boehringer Ingelheim, via the Psychiatry Consortium of the Medicines Discovery Catapult, as well as providing consultancy to ONO Pharma and Boehringer Ingelheim



My background

Early career

BSc Molecular and Cellular Biology, including a year at SKB

MSc in Neuroscience

DPhil in Department of Psychiatry, University of Oxford

Visiting scholarship at NIMH

Postdocs in Departments of Pharmacology and Psychiatry, Oxford

Academia

Lab established in 2009, funded by a Royal Society University Research Fellowship

Public research funding from UK MRC and BBSRC

Unrestricted educational grant from J&J Innovations, Biogen and Boehringer Ingelheim

Industry

Joined Boehringer Ingelheim in December 2021

Director of Translational Neuroscience in the CNS Research Department



Why Boehringer Ingelheim?



Ethos and culture

- Family owned
- High levels of staff retention
- Strong research culture

Approach in CNS

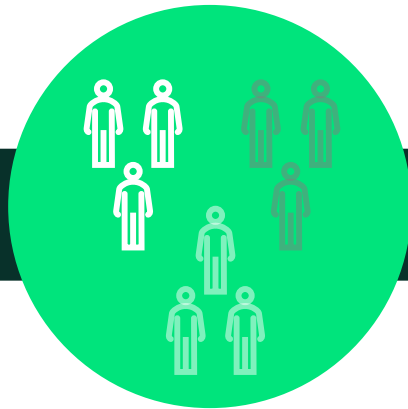
- Sole focus on mental health
- Non-traditional approach – ‘Precision Psychiatry’
- Strong and innovative pipeline

Our vision is to bring precision psychiatry to patients



DSM

Heterogeneous patient groups based on a bundle of symptoms



RDoC-inspired

Identifying clusters of patients who share a common symptom



Circuits and systems

Targeting the underlying biology linked to specific symptoms



Precision psychiatry

Rationally delivering the right solution, to the right patient, at the right time

DSM, diagnostic and statistical manual; RDoC, research domain criteria

How we collaborate



OpnMe
opn2EXPERTS
opn2TALENTS



WARREN CENTER
FOR NEUROSCIENCE DRUG DISCOVERY
at Vanderbilt University

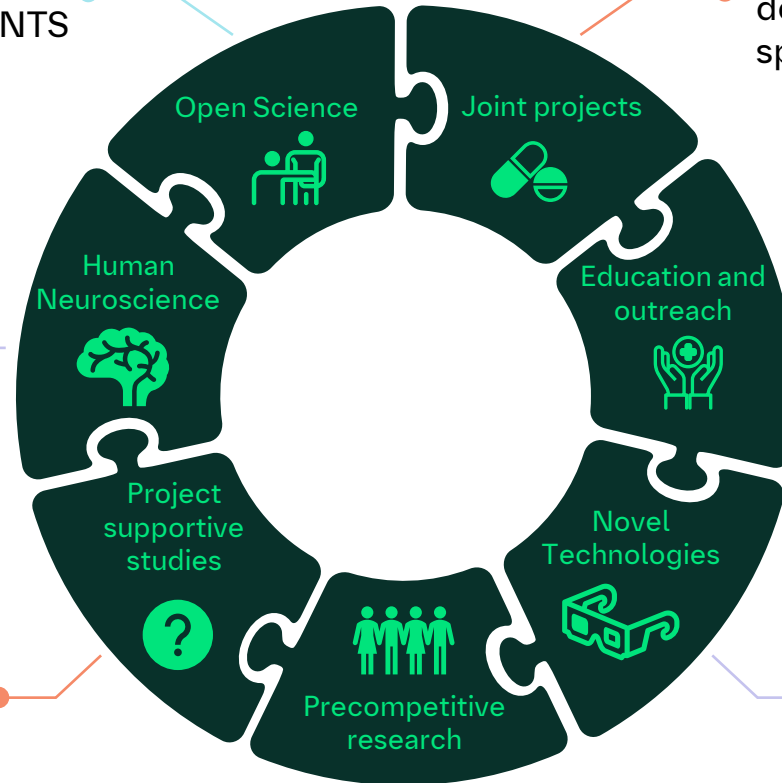
LIBD
LIEBER INSTITUTE for
BRAIN DEVELOPMENT

Stanford
University
Yale



Understanding key
symptom domains &
their neurobiology
Translational
biomarkers and patient
stratification

e.g. Piloting of protocols
and tasks



Co-
development of
specific targets

Precision Psychiatry
Research Symposium
Sponsored symposia at
key conferences

Validation and use of
novel technologies





opnMe - Boehringer Ingelheim's open innovation portal



Visit <https://opnme.com>



M20

Molecule to Order

Compounds are provided free-of-charge without the need to enter into intellectual property discussions



M4C

Molecule for Collaboration

External scientists are invited to submit research proposals to use our unique molecular probes



O2E

opn2EXPERTS

Crowd sourcing platform for scientific expertise to solve important biologic questions by collaboration and research funding



O2T Launched Aug 28, 2023

opn2TALENTS

Young scientists are invited to apply for a PostDoc grant at one of our research sites by proposing a novel approach to our questions

BCL6 DEGRADER | BI-3802 🔗 📄 👍 444


 BCL6 BI-3802

BI-3802 is a single digit nanomolar BCL6::Co-repressor inhibitor which induces efficacious BCL6 protein degradation in several Diffuse large B-cell lymphoma (DLBCL) cell lines (e.g., DC₅₀ = 20 nM in SU-DHL-4 cells).

Add negative control compound to order

[ORDER FOR FREE](#) [READ MORE](#)

PAN-KRAS INHIBITORS | BI-2865 AND BI-2493 🔗 👍 11

 panKRAS inhibitors

Submit testable research proposals that demonstrate the utility of well-characterized, potent and selective pan-KRAS inhibitors BI-2865 and BI-2493 suited for *in vitro* (BI-2865 and BI-2493) and *in vivo* experiments (BI-2493), in novel disease indications with high unmet medical need.

[GET STARTED](#) [READ MORE](#)

Deadline: 12th September 2023 13,144 views 3 answers 🔗 👍 11

Tumor-specific genetic dependencies

Which cancer cell-selective dependency, supported by experimental validation, would you propose to capitalize on to trigger regression in solid tumors?

  Anna Koeferle, Sarah Grosche
Cancer Research
Boehringer Ingelheim

[SUBMIT YOUR ANSWER](#) [READ MORE](#)

Deadline: 30 April 2023 30,758 views 4 answers 🔗 👍 22

Biberach

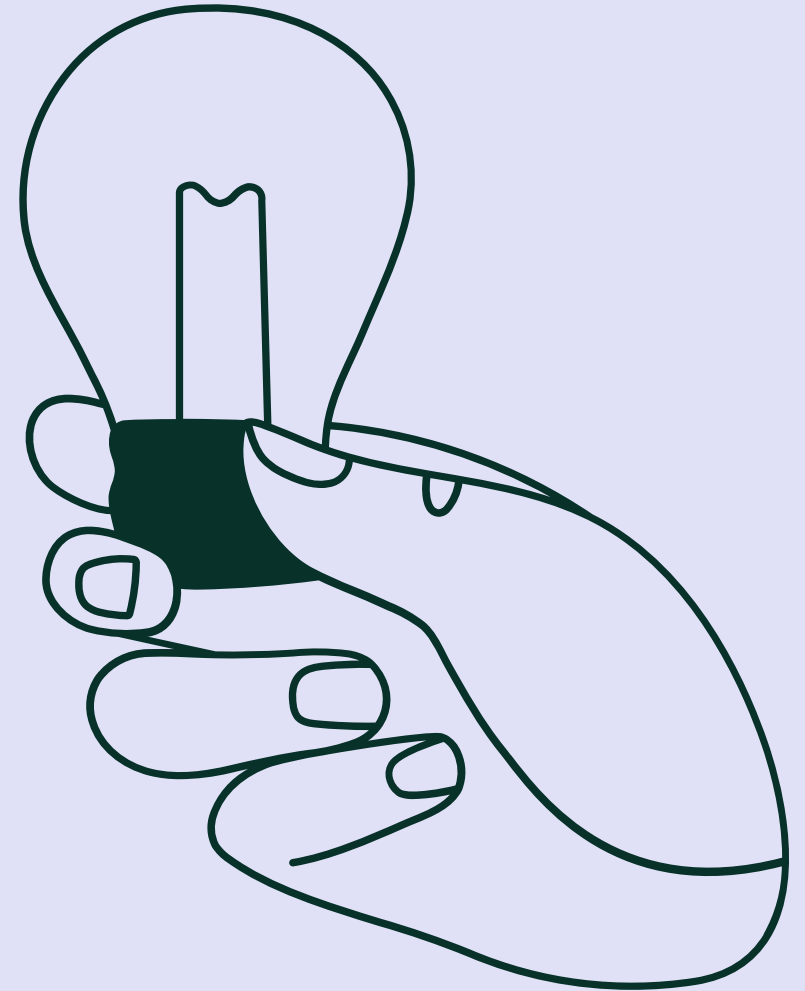
Advanced cellular models for retinal diseases

Using novel cellular systems, how would you propose to explore the multifactorial pathophysiology of retinal diseases with the goal to identify and explore novel therapeutic entry points for patients in need?

[APPLY NOW](#) [READ MORE](#)

Summary

- Recent advances in neuroscience and related fields, mean that the goal of Precision Psychiatry is now tractable
- Industry and academia need to work together closely, alongside other partners, to make meaningful progress in psychiatry
- There are many ways to collaborate, and many shared goals
- The most effective collaborations involve genuine, two-way dialogue





Liz Tunbridge
Director of Translational Neuroscience,
Boehringer Ingelheim

We will shortly be advertising postdoc
positions – come and join us!



Elizabeth.Tunbridge@boehringer-Ingelheim.com
[@LizTunbridge.bsky.social](https://bsky.app/profile/LizTunbridge.bsky.social)
[@LizTunbridge](https://www.instagram.com/LizTunbridge)

